

# — Campus Experiences — Orientation

2023-2024





DINING SERVICES

**Miami Dining**  
Shriver Center  
701 E. Spring St., 207A  
[MiamiOH.edu/Dining](https://miamiOH.edu/Dining)

## On-Campus Dining Venues

Miami University Dining Services takes pride in serving the needs of over 20,000 students, staff, and faculty every day across more than 20 locations. Our commitment to quality and service is reflected in our well over 12,000 meal plan holders. We strive to provide our customers with a diverse range of options that cater to different tastes and dietary needs.

Whether it's a quick snack, a full meal, or a hot cup of coffee, we have you covered. With a team of dedicated professionals, we are passionate about ensuring that every dining experience is enjoyable and meets our customers' needs. Our focus on quality, service, and innovation has made us a leader in the industry, and we are proud to be a part of the Miami University community.



## Dining Events

Miami Dining is more than just meal swipes and Dining Dollars — it's also a hub for fun events and delicious culinary experiences. From Casino Night to chef and registered dietitian pop-ups, food holidays, themed meal takeovers, and cultural food celebrations, there's always something exciting happening on campus. With a focus on creating a vibrant dining community, Miami Dining is more than just a place to grab your next meal — it's a place to connect with friends, try new foods, and make lasting memories. Join us for our next event and experience the best of Miami Dining!

## Armstrong Student Center

550 E. Spring St.  
Grubhub mobile and kiosk ordering available through Armstrong Student Center dining operations.

## Café Lux

Treat yourself to the perfect espresso drink and pastry at this venue named in honor of Miami's Dolibois European Center in Luxembourg.

## Clean Plate at Haines

Clean Plate at Haines is committed to providing safe and delicious dining options for all. Our à la carte restaurant is certified free from the top 9 allergens, ensuring that all students can enjoy a worry-free meal. With a range of grab-and-go options that are both nutritious and flavorful, Clean Plate at Haines is the perfect choice for those seeking allergen-free dining.

## Eiffel Pizza

Indulge in the delectable taste of Eiffel Pizza, a culinary creation by Chef Mohammed. With his extensive training in Paris, Chef Mohammed has crafted a menu featuring freshly-prepared pizzas and pastas bursting with flavor. Whether you're in the mood for a savory pizza or a hearty pasta dish, come experience the unique flavors of Eiffel Pizza.

## Emporium

Visit our campus market for a quick snack, a hot cup of coffee, or to stock up your pantry with all your favorite goodies. We also offer a variety of delicious meals ready to go, available for purchase with Dining Dollars or a meal swipe!

## Kabar Sushi and Asian Bistro

Discover the taste of Asia at Kabar, featuring delicious Asian cuisine like made to order sushi and refreshing boba tea.

## Panera Bread

Panera Bread is set to open for the first time this fall semester as a newly added fast-casual bakery café. Students are excited to try out the fresh and delicious sandwiches, soups, salads, pastries, and coffee that Panera has to offer. Panera is sure to become a popular spot for students to grab a quick and satisfying bite in between classes or meetings. Be sure to check it out once it opens this semester!

## Pulley Diner

Step back in time to this 1950s-style diner with a menu featuring burgers, grilled chicken sandwiches, fries, and a variety of milkshakes and ice cream.

## Red Zone

Hot dogs, fries, wings, and other "ball game" favorites are featured in this space dedicated to the history of Miami University Athletics.





### Bell Tower

401 E. High St.

Bell Tower is a premier “ghost kitchen” mobile order and food locker pickup concept that brings three different food concepts together under one roof. What’s more, customers will be able to order from these concepts and have their food conveniently delivered via Starship robots. A Starbucks location is also coming soon, making Bell Tower a true one-stop-shop for all your food and beverage needs.

### Dividends

800 E. High St. - Inside Farmer School of Business

### Asian Market

Choose from sushi, dumplings, rice, edamame, and spring rolls.

### Fiscal Grind

Caffeinate your day with our Miami Grind specialty coffee or choose from a selection of teas. Pair your drink with a warm baked good for the perfect on-the-go snack.

### Panini Portfolio

Enjoy a selection of freshly-pressed sandwiches.

### Preferred Stock

This rotating soup menu includes campus favorites such as Tuscan Chicken, Roasted Roma Tomato, and Miami’s Signature Chili.

### Traders’ Greens

Enjoy a personalized entrée salad with an extensive selection of delectable toppings.



### Garden Dining Commons

95 N. Patterson Ave.

### Garden Market

Come to the market for a quick snack, bottled beverage, or other prepackaged items conveniently located next to Garden Commons.

### Garden Commons

Located next door to the Farmer School of Business, Garden Commons is the perfect all-you-care-to-eat dining spot for a delicious meal. Find your classic favorites and discover new ones with our rotating menu, all while using meal swipes or Dining Dollars. Enjoy your meals in the beautiful dining areas with vaulted ceilings or enjoy the weather on the outdoor seating area.

### King Café

151 S. Campus Ave. - Inside King Library

Take a break from your studies at King Café. Recharge with a quick meal or coffee. Whether you’re in a rush or need a moment to relax, this is the perfect spot to satisfy your cravings and fuel up for your next study session.



### Maplestreet Dining Commons

571 Maple St.

Maplestreet Commons is an all-you-care-to-eat dining hall and one of the busiest hubs on campus. It offers an expansive range of cuisines and themes, including Asian, Mexican, classic favorites, pizza, pasta, a salad bar, and delicious baked treats.

You can also indulge in Maplestreet’s famous ice cream. The dining hall provides a restaurant-style feel with distinct “venues within the venue” for each type of cuisine. In addition, there’s an allergen station that is free of the top 9 allergens, as well as vegan menu offerings, ensuring that everyone can enjoy their meal.

### Market Street at MacCracken

500 Center Dr.

As the largest market on campus, Market Street at MacCracken features a wide variety of packaged food and everyday necessities, including an extensive selection of locally produced offerings.

In addition, the Market Street Grill that is located in the store features made-to-order breakfast sandwiches, burgers, hot sandwiches, and appetizers while the coffee and smoothie bar offer freshly brewed Miami Grind Coffee and handcrafted smoothies.



### Martin Dining Commons

5397 Bonham Rd.

### Scoreboard Market

A convenience market and short-order grill offering a large variety of packaged foods and beverages as well as made-to-order sandwiches, sides, and appetizers that you can order through the Grubhub app.

### Martin Commons

Located in the campus athletic complex, Martin Commons serves as the all-you-care-to-eat dining hall where students can find the foods to fuel their lifestyles.

Athlete or not, Martin’s menus are designed in conjunction with our registered dietitians to provide menu offerings customized to meet specific needs — from a carb-loading customizable pasta station to a fruit and juice smoothie bar to carving stations to provide much-needed protein to fuel performance.

### Starbucks

701 E. Spring St. - Inside the Shriver Center  
201 Tallawanda Rd. - Inside Withrow Hall  
401 E High St. - Inside Bell Tower Commons

Enjoy a cup of quality coffee from Starbucks today. Iced beverages, blended coffees, bakery items, bottled drinks, sandwiches, and snacks available daily.



## Western Dining Commons

480 Western Dr.

### Greystone Market

Located adjacent to Western Dining Commons, Greystone Market offers a wide variety of snacks, drinks, daily household items, and packaged meals to go.

### Western Dining Commons

Western Dining Commons offers more than just delicious food. As a LEED Certified Silver Building, it's also a model of sustainability. Choose from a diverse range of cuisines, from classic comfort food to global flavors at this all-you-care-to-eat dining hall. The spacious dining area features an abundance of natural light and modern decor, making it the perfect place to gather with friends or take a break from a busy day. And don't forget to check out the outdoor seating area!



## Dining Accommodation Needs

Miami Dining is committed to going above and beyond expectations to ensure students can dine safely on campus regardless of dietary needs. We assist students with a wide variety of dietary restrictions including food allergies, intolerances, and medical needs through a partnership with the Miller Center for Student Disability Services. We also take into consideration cultural backgrounds, religious affiliations, and lifestyle choices.

Discover comprehensive dietary resources for students on our Miami Dining website. Explore the “Menus and Hours” tab to access a wide range of menus, featuring convenient filters to cater to your specific dietary preferences. Additionally, you’ll find valuable nutrition information to enhance your dining experience.

Please contact our registered dietitians at [DiningDietitian@MiamiOH.edu](mailto:DiningDietitian@MiamiOH.edu) for more information.

## Nut-Friendly Dining Commons

Our dining commons are NUT-FRIENDLY. This means we do not actively include peanuts and tree nuts (including coconut) in our recipes. We avoid purchasing ingredients that house a “may contain [nuts]” statement in our recipes. We do however, purchase ingredients that may contain a “processed in the same facility with [nuts]” or “processed on shared equipment with [nuts]” statement. For those who enjoy nut products, don’t worry! We have packaged nut products in the retail markets. Other retail locations on campus may have nuts in their menus, for example, Panera and Starbucks, but the majority follow the nut-friendly initiatives.

## Grubhub Mobile Ordering

With Grubhub, you can beat the lines and order ahead at select locations across campus, including popular spots like Pulley Diner. Plus, with the app’s handy features, you can easily track your order status, view menus, and customize your meals to fit your preferences.

If you’re looking to take your dining experience to the next level, consider using Grubhub to order delivery from Bell Tower through our Starship robots. These friendly, high-tech bots are stationed at Bell Tower and can deliver your food straight to your location on campus. Simply place your order through the Grubhub app and let the robots do the rest! It’s a fast, convenient way to get your favorite meals delivered to you on the go.



## Meal Plans

Depending upon the level you select, you will get a specific number of meal swipes added to your account each week. If you have any unused meal swipes at that time, they do not carry forward. Our Diplomat Minimum, Plus, and Standard levels also come with a “Bonus Week” of meal swipes. This means that those plans come with an extra week’s worth of meal swipes, which DO roll forward each week. Find more meal plan information including pricing on the following page.

## Meal Swipe Flexibility and Dining Dollars

For quicker on-the-go options, our retail market locations and Bell Tower offer Meals To Go that include an entrée, piece of fruit, and a water bottle that can be purchased with one meal swipe. For continuing students, any unspent Dining Dollars will automatically transfer to your meal plan for the next term. We encourage you to monitor your balance regularly and budget carefully if you’re considering future deposit amounts before the end of the semester.

## Vending on Campus

There are over 198 machines across campus, conveniently located in residence halls and academic buildings. Offering a wide variety of beverages, snacks, healthy options, and more, available 24 hours a day.





CAMPUS SERVICES CENTER

**Campus Services Center**  
**Nellie Craig Walker Hall**  
**301 S. Campus Ave., 034**  
[MiamiOH.edu/Campus-Services](https://miamiOH.edu/Campus-Services)

## 2023–2024 Meal Plans

Whether you're looking for flexibility, transparency, or simplicity, we've got the perfect plan for you. Our Diplomat Meal Plans combine meal swipes with Dining Dollars, so you can enjoy a wide range of dining options across campus. And with our easy-to-use system, you'll be able to focus on what really matters: enjoying your meals! Learn more about your meal plan options below, and also be sure to explore dining options in the "Places to Eat" section of our Miami Dining website at [MiamiOH.edu/Dining](https://miamiOH.edu/Dining).

Meal plans are available to all Miami University students, and are required for all students living in residence halls. Students can change their meal plan selection up to the first day of each semester. You can login to your housing portal to update your meal plan selection at [MiamiOH.edu/housingcontract](https://miamiOH.edu/housingcontract).

## Meal Plan Pricing for 2023–2024\*

Level	What's Included Each Semester	Cost per Semester
Diplomat Premium	Provides unlimited buffet meals for you, \$800 declining balance dollars, and 5 guest meals. Rest assured that you can eat at buffets as often as you'd like, and also use your flexible spending dollars at any dining location on campus.	\$3,767 (proposed)
Diplomat Plus	Provides 7 buffet meals per week, \$1,100 declining balance dollars, and 5 guest buffet meals. This plan also provides a bonus week's worth of buffet meals that can be used at any time during the semester!	\$3,221 (proposed)
Diplomat Standard	Provides 16 buffet meals per week, \$500 declining balance dollars, and 5 guest buffet meals. This plan also provides a bonus week's worth of buffet meals that can be used at any time during the semester!	\$3,091 (proposed)
Diplomat Minimum	Provides 14 buffet meals per week, \$100 declining balance dollars, and 5 guest buffet meals. This plan also provides a bonus week's worth of buffet meals that can be used at any time during the semester!	\$2,447 (proposed)

\*Meal plan options are PROPOSED costs for tuition promise 2023–24 Cohort. See our website for all other costs at [MiamiOH.edu/MealPlans](https://miamiOH.edu/MealPlans).

## MUlaa

MUlaa is an on-campus debit account that is used for the residence hall laundry machines, RedHawk retail locations, MU Box Office, MUPrint printers and copiers, and vending.

To add money to your account, sign up on your "Housing and Meal Plan Contract."

To deposit additional money into an account, simply access the One Stop website at [MiamiOH.edu/Onestop](https://miamiOH.edu/Onestop).

MUlaa is refundable.

To view transactions and balances visit [WebCardCenter.MiamiOH.edu](https://WebCardCenter.MiamiOH.edu).

## Residence Hall Staff

The Residence Life staff includes full-time professionals, graduate students, and undergraduate students.

A Resident Assistant (RA) lives in each residence hall corridor to help students make the transition from high school to college and to plan special events so students get to know one another. These carefully selected and trained upperclass students are also familiar with the scheduling process and often share their own knowledge and experience.



A Resident Director will live in your community as well. They will help shape the environment and experiences of residential students.

## Room Assignments

During the summer, our office works diligently to finalize housing assignments. We strive to meet as many preferences and requests as possible. In order to meet the most preferences, our process takes the majority of the summer.

Room assignment information for incoming first year students is sent out by email in late July/early August.

## Living Requirements

At Miami, we highly value the residential experience for student success. All first-year and second-year students are required to live on campus unless they meet one of the following criteria:

- At least 21 years of age before the first day of class.
- Have matriculated full-time for at least two years at another institution of higher education or a regional campus (credits must be post high school).
- Commute from the home of a parent or legal guardian.

## Airport Shuttles

Airport shuttles with multiple departures and returns to and from the Cincinnati (CVG) airport are offered for Thanksgiving, winter break, and spring break using professional charter coaches at a cost of only \$40 each way (inclusive of rider and luggage). Visit [MiamiOH.edu/Shuttle](https://MiamiOH.edu/Shuttle) for more information.

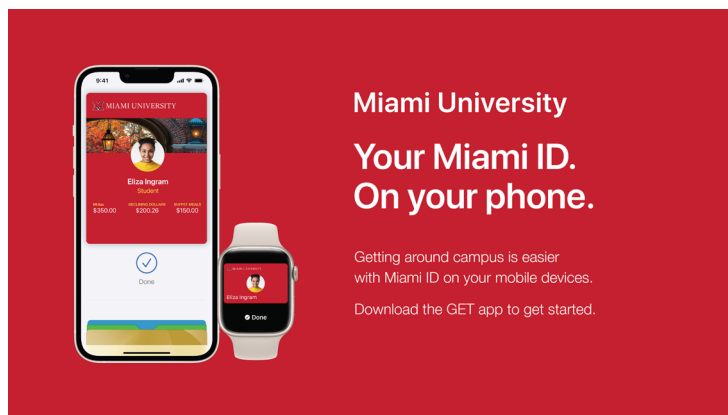


## Miami Digital ID

Miami University has implemented the Miami Digital ID as an official form of identification. Utilizing the Miami Digital ID ensures you are never without your key to campus.

The Miami Digital ID is available at no cost to all students and is the default form of ID for incoming students beginning in fall 2023. The ID provides access to residence halls, campus buildings, meal plans, Recreational Sports Center, MUIAA debit accounts, library resources, and more.

Using Digital ID is easy, and directions for loading Digital ID directly from the GET app can be found at [MiamiOH.edu/DigitalID](https://MiamiOH.edu/DigitalID). An approved photo must be uploaded to the GET app before Digital ID can be loaded onto your smartphone or smartwatch. Photo approval could take 24-48 hours. **Be sure the Digital ID is loaded on your device before you arrive for move-in.**



## Learn More

If you have any questions do not hesitate to contact the Campus Services Center at [CampusServicesCenter@MiamiOH.edu](mailto:CampusServicesCenter@MiamiOH.edu) or in person in room 034 of Nellie Craig Walker Hall.

## Housing FAQs

### When will I find out where I'm living?

Housing assignment information will be emailed to your Miami account in late July/early August.

### What linens will I need?

You'll need to provide your own pillows, blankets, and sheets (which fit an 80" x 36" XL twin mattress). You and your roommate(s) may want to coordinate bedspreads and additional items to decorate your room.

### What furniture is provided?

All rooms are furnished with beds, dressers, desks, desk chairs, bed rails, trash can, recycling can, and closets or wardrobes. Due to campus storage space limitations, requests to remove university provided furniture cannot be accommodated. Students are discouraged from bringing their own furniture to campus. Typically, rooms can only safely accommodate the furnishings provided.

### What appliances can I use in my room?

Approved appliances for use in student rooms include stereos, televisions, computers, fans, clocks, lamps, irons, blow-dryers, curling irons, single-serve contained coffee makers, and powerstrip cords with built-in circuit breaker. All items must be Underwriters Laboratory approved.

### What items can I not use?

The following items are prohibited in your room: private loft beds, bed risers, electric blankets and sheets, hot plates, sun lamps, candles, electric skillets and grills, toaster ovens/toasters/popcorn poppers, open hot pad coffee makers, halogen lamps, wireless router, wireless printer, and non-circuit breaker equipped extension cords.

### How large are the residence hall rooms?

The size of our rooms varies from one residence hall to another, as a result of architectural differences. You will receive the dimensions of your room when you get your assignment in late July/early August. The majority of rooms are multiple occupancy rooms for two people.

### Will I have internet in my room?

Yes, each room has both wired and wireless connectivity providing access to the internet and local network resources.

### Do I need to purchase property insurance?

Miami does not assume responsibility for the loss of money or valuables, damage to property, or injuries on the premises. If you are not covered under your parent/guardian homeowner's insurance policy, we strongly recommend that you make arrangements for insurance protection against such losses, such as renters insurance.

### What can I use to hang items on my walls?

You may decorate your walls using molding hooks ("S" hooks), twine, and reusable poster putty. Due to the room damage they create, Command Strips, Scotch tape, duct tape, adhesives, tacks, nails, screws, or pins may not be used for any purpose (students are responsible for room damage including the room door).

\*LED lights are not recommended for use in the residence hall rooms as the double-sided tape used to attach them to the walls will cause damage resulting in damage fees. Residents are responsible for any repairs/damages regardless of supplies used if damage results.

Room decorations must not be affixed to or suspended from the ceiling, light fixtures, smoke detector, occupancy sensors, or sprinkler heads. You may be held financially responsible for the repair and clean-up resulting from an unintentional/intentional activation of a sprinkler head.



### Can I park on campus?

A parking permit is required to park on Miami University's campus at all times unless in a garage or at a meter. Please contact the Campus Services Center at 513-529-5000 or visit our website at [MiamiOH.edu/Parking](https://miamiOH.edu/Parking) for questions concerning eligibility for or purchasing parking permits.

### Can I have a pet?

Pets are not permitted in the residence halls, except for small fish. Tank size cannot exceed five gallons, and tank heaters are not allowed.

### What if my roommate and I do not get along?

Roommate conflicts are mediated by your Residence Hall Director and Residence Life staff members, who encourage open communication between roommates to come to a mutual resolution.



## JOIN THE CLUB!

Save 10% off every night you stay.

*All current Miami University parents are eligible.*

BASED ON AVAILABILITY

*Not valid on Family Weekend and Commencement*



REGISTER ON OUR WEBSITE  
[MiamiOH.edu/Marcum](https://MiamiOH.edu/Marcum)

**THE MARCUM**  
Parents Club

951 E. Withrow St. Oxford, OH 45056  
(513) 529-6911



### Hours of Operation

#### Smart Locker Access

Monday-Sunday  
24 hour access

#### Customer Pickup Window

Monday-Friday  
8 a.m. - 5 p.m.  
Saturday  
11 a.m. - 2 p.m.

#### U.S. Post Office

Monday-Friday  
8 a.m. - 4 p.m.  
(money orders available)

### Smart Lockers

The Mail and Package Center receives packages for students living on campus in university residence halls during the academic year.

#### Due to the high volume of packages received on a daily basis:

- Packages will be held for 24 hours in lockers.
- An email will be sent with locker codes and locker location for pickup.
- If not picked up from locker in first 24 hours, the package is then moved to the Customer Service Pickup Window for an additional 48 hours.
- After 72 hours, the package is returned to sender unless special arrangements have been approved for additional holding.

### Mail and Package Center

Shriver Center  
701 E. Spring St., 113  
513-529-9221  
[MiamiOH.edu/Mail](https://MiamiOH.edu/Mail)

### Receiving

As a student, you may receive mail from two different locations on campus:

#### Your mailbox at your residence hall

- All letter-size mail, newspapers, and magazines will be delivered to your residence hall mailroom.
- Sorted into your mailbox by RAs by 8 p.m. on Monday and Thursday.

#### Mail and Package Center

- For all packages, letters that require a signature, or anything too large to fit in your residence hall mailbox.

### Mail Forwarding

During winter term and summer break, letter mail will be forwarded to your home address.

Contact the Mail and Package Center and request to continue your mail if you stay on campus during winter term and want to continue to receive mail on campus.

Mail will be available for pickup at the Mail and Package Center.

Students graduating, leaving the university, or who will be living off-campus the next term must notify all correspondents of their new address.

Mail will no longer be forwarded for these students after the first day of the academic year in August.

Mail received after this date will be returned to sender.

## Resident Mailing Address

Your Name (include middle initial)  
Hall Name and Room Number  
Hall Street Address  
Oxford, OH 45056

## Package Forwarding

Residents must stop by the Mail and Package Center before leaving campus and pickup any remaining packages being held.

Any items that have not been picked up by the first day of summer will be returned to sender (RTS).

During summer, packages received from the U.S. Postal Service will be forwarded to student's registered home address, along with all other U.S. mail.

All other shipping companies such as FedEx, UPS, and DHL charge additional fees for forwarding packages. Packages delivered by these carriers will be refused. Contact Amazon, FedEx, LaserShip, UPS, or DHL directly to make arrangements for forwarding.



## How to Use the Smart Locker System

Notification of packages placed in the Smart Lockers will arrive via email from **NoReply@neopostwts.com**.

Packages held at the customer service window will come from **NoReply@neopostwts.com**.

In addition, a text message will be sent out.

- Navigate to the Mail and Package Center in 113 Shriver Center within 24 hours of receiving the notification.
- Locate the appropriate locker bank number and kiosk as provided in the notification.
- On the kiosk screen, select "Pick-up Parcel."
- Scan the barcode at the numbered kiosk assigned in the email notification
- You may also use your pickup codes at the numbered kiosk assigned in the email notification.
- Use your finger to provide a digital signature for access confirmation.
- The designated locker containing your package will open automatically.
- Remove your package.
- Close the door completely to end the process.

### Lost your pin code information?

Go to the customer service pickup window to receive a new code.

### Can't pick up your package within 24 hours?

Forward your notification email to a roommate or friend to pick up your package for you.

# Student Employment

## Student Employment

Looking for an on-campus job? Apply with Miami Dining starting at \$14 an hour for student positions! All Miami Dining hiring is coordinated through Aramark, visit [Careers.Aramark.com](https://careers.aramark.com) to find available positions.



STARTING AT **\$14/HOUR**



ON CAMPUS



FLEXIBLE HOURS



FREE FOOD

**APPLY TODAY**

[careers.aramark.com](https://careers.aramark.com)







**Brick & Ivy Campus Store**  
 Shriver Center  
 701 E. Spring St., Floors 1 & 2  
 513-529-2600  
[CampusStore.MiamiOH.edu](http://CampusStore.MiamiOH.edu)

*Shop Now!*

### Brick & Ivy Campus Store and Online Bookstore

Brick & Ivy is Miami University's destination retail experience. Whether in store or online, Miami's campus store offers an impressive selection of branded apparel, merchandise, gifts, Myaamia Heritage Collection, and more. Be sure to visit us during orientation for exclusive special offers.

We're located in Shriver Center next to Starbucks and online at [CampusStore.MiamiOH.edu](http://CampusStore.MiamiOH.edu).

#### Top 5 Reasons to Shop at Brick & Ivy:

- Best selection of branded apparel and merchandise for all Miami fans
- Textbook pickup location for materials ordered through Miami's Online Bookstore
- Buy online with free in-store pickup
- Art and class supplies to be first day ready
- On-trend styles from your favorite brands including Vineyard Vines, Cutter & Buck, Johnnie-O, Columbia, and more!

Want exclusive offers and the inside scoop on new arrivals and store events?

**SIGN UP HERE**

#### Regular Store Hours

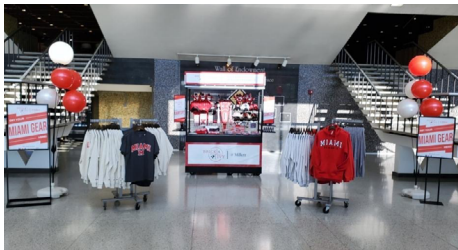
Monday-Friday 8:30 a.m. - 5 p.m.

Saturday 10 a.m. - 4 p.m.



Millett Hall

Stop by Brick & Ivy at Millett Hall during home men's basketball games. We open 60 minutes before game start where you can shop a great selection of gameday gear to help cheer the RedHawks to victory!



Yager Stadium

Brick & Ivy is your gameday store! Visit us at the west gate of Yager Stadium for all your gameday gear. We open 90 minutes before kickoff.





## Rec and Goggin Pro Shops



### Miami Recreation Center Pro Shop

Here you will find post-workout food and beverages, athletic clothing, Miami Spirit Wear, and accessories.



### Goggin Ice Center Pro Shop

Support your RedHawks on game day by shopping the athletic venues that offer official Adidas sideline gear, spirit wear, and accessories.

**Books by eCampus**  
—campusstore.miamioh.edu—

# Welcome

to Miami University's  
Official Online Bookstore



- ✓ The right professor-selected course materials guaranteed
- ✓ Free 1-day shipping to Brick & Ivy Campus Store
- ✓ Risk-free early ordering; returns up to 30 days after classes begin

**campusstore.miamioh.edu**

Textbook ordering available now



Questions? 859-209-6958 or bookstore@ecampus.com

**Books by eCampus**

**ORDER TEXTBOOKS NOW**



## Recreation

Miami Recreation is dedicated to meeting the diverse recreational needs of its patrons.

Our primary goal is to provide an environment that promotes and enhances wellness in the lives of Miami students, members, and guests. Participants enjoy informal recreation, swim lessons, riding camps, academic courses, open pool time, group fitness classes, adventure activities, gaming at the Esports Lounge, intramural and club sports, and special events year-round.

The primary Recreational Center (aka “The Rec”) is open 113 hours per week in addition to three satellite recreation facilities at Martin Dining Hall, Clawson Hall, and Chestnut Fieldhouse. Each has a unique program and informal recreation options. Access to these spaces for informal recreation is included in student fees with additional cost for programs. Visit [MiamiOH.edu/Rec](http://MiamiOH.edu/Rec) for more information.

### Program Options

- Personal Training
- Fitness Classes
- Outdoor Trips
- Intramural Sports
- American Red Cross
- Club Sports
- Swim Lessons
- Scuba
- Water Fitness
- Riding Lessons
- Fully Stocked Pro Shop
- Living Learning Communities
- Team Building
- Outdoor Equipment Rental Personal



## Goggin Ice Center

The Goggin Ice Center provides students, faculty, staff, and the surrounding community a space to engage in informal recreation, providing programming geared towards all ages and all abilities. Goggin offers a variety of recreational opportunities such as public skating and instruction in ice skating, hockey, broomball, and curling. Participation options exist for intramural and club level team play throughout the school year with on-ice academic classes offered for educational credit.

Goggin also serves the area in youth skating and hockey programming and is home to the Miami University Varsity RedHawk ice hockey and synchronized skating teams. Goggin offers a wide range of free events during the first couple weeks of the semester including Welcome Back Skates, Broomball, and Curling Clinics. Goggin also features additional meeting spaces with catering options available or private ice rentals for student group events, family events, and much more. Visit [MiamiOH.edu/Ice](http://MiamiOH.edu/Ice) for more information.







**MiTech Campus Technology Store**  
Shriver Center  
701 E. Spring St., Floor 1  
513-529-2634  
[MiTech.MiamiOH.edu](http://MiTech.MiamiOH.edu)

LAPTOPS | DESKTOPS | TABLETS | HEADPHONES | SPEAKERS | CASES AND MORE!



**Authorized  
Campus Store**

TM and © 2023 Apple Inc. All rights reserved.



## MiTech

MiTech is the on-campus technology resource for the students, faculty and staff as well as the surrounding community. MiTech offers products including Apple and Dell laptops, iPads, AirPods, Bluetooth speakers, gaming headsets, mice, keyboards, backpacks and more.

Purchasing a laptop at MiTech allows students to opt into the student laptop program, which affords them discounted and even free services as well as a loaner laptop to use while theirs is being serviced, diagnosed, or repaired. Students are able to use their Apple student discount on both in-store products as well as online purchases at [MiTech.MiamiOH.edu](http://MiTech.MiamiOH.edu).

Please visit us today on the first floor of the Shriver Center, across from Admissions.

## Why Buy From Us?

### STUDENT LAPTOP LOANER PROGRAM

- If your laptop breaks, we provide a replacement until yours is fixed.
- Discounted or even free repairs at the store.

### LOW PRICES

- Educational discounts are passed on to our customers.

### WALK-UP SUPPORT

- In-person, on-campus support to help you with your technology issues.

Visit us online at [MiTech.MiamiOH.edu](http://MiTech.MiamiOH.edu).



# Student Employment

## Looking for a job at the Rec Center, Goggin, or MiTech?

The National Center for Education Statistics has found that “students working 1-15 hours weekly earn higher GPAs” than students who do not work at all.

With over 1,500 student employees, Campus Services is the largest employer of students on campus. We take pride in offering a student employment experience that both engages and empowers each student.

Check out our open positions at [Jobs.MiamiOH.edu](http://Jobs.MiamiOH.edu). Call 513 529-3721 with any questions.





*Have Questions?*

[MiamiOH.edu/Campus-Services](https://miamiOH.edu/Campus-Services)

