

HISTORY & BACKGROUND

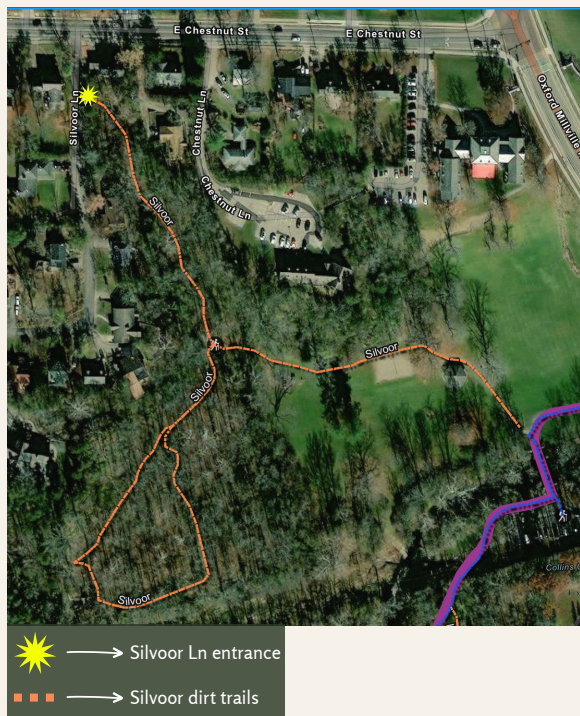
The land where Silvoor is located was originally inhabited by the Myaamia and Shawnee people who were forcibly displaced from their ancestral territories. Prior to this removal, the land was likely used for hunting.

Silvoor Biological Sanctuary was established as a wildflower preserve by Dr. Robert A. Hefner and his family in 1930. Today, the sanctuary encompasses a blend of university and private lands, benefiting from the creative and collaborative management efforts of local residents and volunteers.



Silvoor Culvert Entrance, 1935
(source: *Silvoor Notes*, Hefner Family Album p78-80)

MAP OF SILVOOR



Visit the website below to learn more about Silvoor Biological Sanctuary and explore the many beautiful trails within Miami University's Natural Areas.

<https://miamioh.edu/life-at-miami/natural-areas/>



Front cover photo credit: Enjoy Oxford
All other photos: Amanda Bentley Brymer
Brochure produced by: Lily Rueckhaus

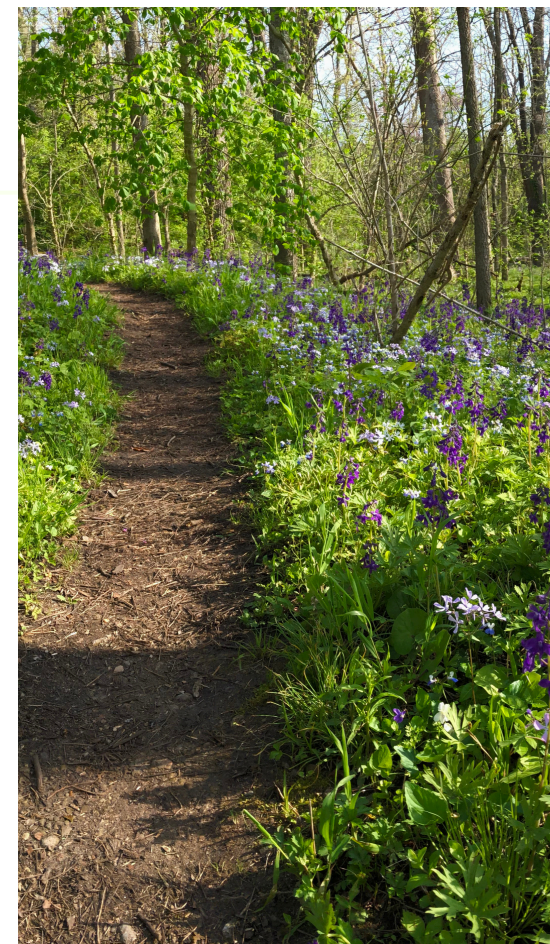
Silvoor Biological Sanctuary



Oxford, Ohio



Wildflower Walks





Virginia Bluebells
Mertensia virginica



A spring ephemeral that emerges early in woodlands, displaying clusters of pink buds that open into soft, trumpet-shaped blue flowers. It thrives in moist, rich soils.



Blue-eyed Mary
Collinsia verna



These flowers have a mechanism that when a bee lands, the flower's stamens snap forward, dusting the bee with pollen, ensuring the bee carries it to the next flower.



Dwarf Larkspur
Delphinium tricorne



A woodland wildflower with slender stems and pale blue to violet blooms in spring. While charming to the eye, all parts of the plant are toxic if eaten.



Wild Geranium
Geranium maculatum



A wildflower with soft pink to lavender, five-petaled blooms that form loose clumps in rich, shaded soils. Its roots were traditionally used for their natural astringent properties.



Miami Mist
Phacelia purshii



A woodland plant with pale lavender to white, fringed flowers that create a soft, mist-like look. Its common name reflects the history and local region where the plant is native.



Purple Cress
Cardamine douglassii



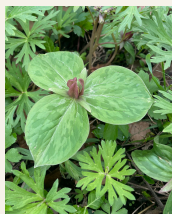
Also called Douglas' bittercress, this flower blooms early, splashing tiny purple flowers across the forest floor and feeding early bees and hoverflies.



Fire Pink
Silene virginica



A bright woodland wildflower with vivid red, star-shaped blooms that attract hummingbirds. It grows in dry to rocky soils and blooms in late spring to early summer.



Toadshade
Trillium sessile



A spring-blooming woodland wildflower with three mottled leaves and a single maroon flower that attracts flies and beetles.



Canadian Wild Ginger
Asarum canadense



A low-growing, perennial woodland plant native to eastern North America, with heart-shaped leaves and small, brownish-purple flowers.



Jack in the Pulpit
Arisaema triphyllum



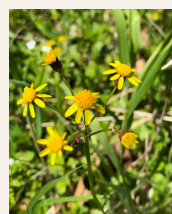
Features a distinctive hooded spathe ("pulpit") surrounding a spadix ("Jack"), with three-part leaves and red berries in late summer.



Yellow Trout Lily
Erythronium americanum



A plant with mottled, trout-like leaves and nodding yellow flowers that grows in rich, shaded forests and can take several years to mature before producing its first bloom.



Golden Ragwort
Packera aurea



A spring-blooming woodland wildflower with bright yellow flowers, growing from rhizomes in moist, shady soils.



Dutchman's Breeches
Dicentra cucullaria



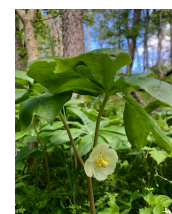
A wildflower with delicate, fern-like leaves and distinctive white flowers shaped like tiny upside-down pants, named for their resemblance to traditional knee-length trousers.



Large White Trillium
Trillium grandiflorum



Its flowers start out pure white but gradually turn pink as they age. This color change may signal to pollinators which flowers still have nectar.



Mayapple
Podophyllum peltatum



A perennial woodland plant with umbrella-like leaves and a single white flower that develops into a yellow fruit. It grows in colonies.



Bloodroot
Sanguinaria canadensis



Called "bloodroot" because its rhizome oozes a red sap that was historically used as dye and in traditional medicine.



False Rue Anemone
Enemion biternatum



Smaller and more delicate than Rue Anemone, with stems and flowers that appear in loose clusters. It typically has 5 petal-like sepals.



Rue Anemone
Thalictrum thalictroides



A plant with star-like blooms that usually have 5 - 10 petal-like sepals, often appearing more open and showy with fuller leaf clusters.